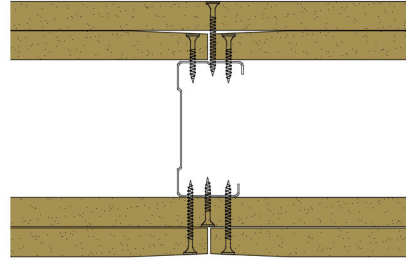


70-K-58 - SPEEDLINE System Data Sheet - Version V1 (24-10-23)

SPEEDLINE 70mm 'C' Stud Partition @600mm Ctrs,
with 2x Knauf 15mm Wallboard each side



System Performance Breakdown

Fire Resistance:

BS476 Part 22:1987:

Test Ref & Date or Applied Ref & Report:

Max Height:

Thickness:

Duty Grade: BS 5234: Part 2:1992:

Sound Insulation:

60/60 Minutes (Integrity/Insulation).

BRE 208596 - BRE Report P102396-1011B

Refer to Speedline Specification Clause

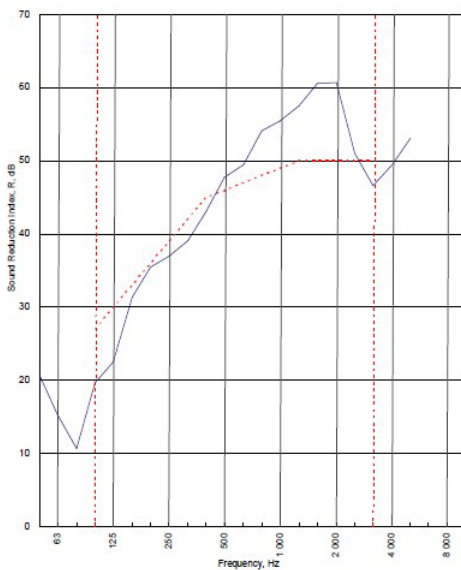
132 mm. (At Base Track, Excluding Finishes)

Severe - Annexes A-F

46 R_w dB, Date Tested or Assessed Against - 70-K-57

Test Code:
H17517AA
Test Date:
08/08/2011

Freq. Hz	R dB
50	20.8
63	15.3
80	10.7
100	19.6
125	22.5
160	31.4
200	35.4
250	36.9
315	39.1
400	43.1
500	47.7
630	49.4
800	54.1
1 000	55.5
1 250	57.5
1 600	60.6
2 000	60.7
2 500	51.0
3 150	46.6
4 000	49.4
5 000	53.1
6 300	
8 000	
10 000	



Rating according to BS EN ISO 717-1:1997	R_w (C;Ctr) = 46 (-3;-9) dB		
Evaluation based on laboratory measurement results obtained by an engineering method:	$C_{50-150} = -6$ dB	$C_{50-500} = -5$ dB	$C_{100-500} = -2$ dB
	$C_{3,50-3150} = -16$ dB	$C_{3,50-5000} = -16$ dB	$C_{1,100-1000} = -9$ dB

TESTED AT ONE OF THE UKAS ACCREDITED LABORATORIES BELOW

B.T.C (H-Ref on Graph)

B.R.E

AIRO

S.R.L

Customer: Metsec plc Hpsc Division

BTC 17517A: Page 8 of 10

